



Webinar Presentation

# Generating Options Trading Ideas Using Fidelity's Tools and Resources

BROKERAGE: **OPTIONS**



# Options Investors Need Powerful Tools



## Generate new trading ideas

Generate new trading ideas and validate existing ones with online tools from Fidelity.com

## Feel confident in your trading decisions

Access in-depth, high-quality analytical market data and independent expert analysis

## Navigate with ease from page to page

Easily navigate through integrated pages that keep your desired symbol in context



# Navigate to Options Research on Fidelity.com

Visit Fidelity.com and click: News & Research > Options.

The screenshot shows the Fidelity.com Options Research page. At the top, there is a navigation bar with the Fidelity logo, links for Customer Service, Profile, Open an Account, Refer a Friend, and Log Out, and a search bar. Below this is a secondary navigation bar with categories: Accounts & Trade, Planning & Advice, News & Research (selected), Investment Products, and Why Fidelity. The main content area is titled 'Options' and includes a 'Research >' breadcrumb and a disclaimer. There are tabs for 'Quotes & Tools', 'Market Overview', and 'Trading Ideas'. A 'View Demo' link and 'Fidelity Learning Center' link are also present. The page is divided into three main sections: 'Argus Focus List', 'Market Commentary', and 'Markets'. The 'Argus Focus List' section includes a table of stock symbols and annualized return rates. The 'Market Commentary' section features a headline 'Stocks Rise Tuesday' and a brief text snippet. The 'Markets' section contains an 'IV INDEX MONITOR' table.

**Argus Focus List**  
 PROVIDED BY ARGUS  
 02/10/2020 4:00:00PM  
 Top covered calls and diagonal spreads.

Stock Symbol	Annualized Return Rate*
	192.57%
	131.10%
	114.42%
	97.90%

**Market Commentary**  
**Stocks Rise Tuesday**  
 PROVIDED BY ARGUS  
 02/11/2020 5:44:00AM  
 Stocks in the U.S. are higher at mid-morning Tuesday. Federal Reserve Chairman Jerome Powell is testifying in front of Congress today and tomorrow as part of a semi-annual report from the central bank. At present, the S&P 500 is up 0.69%, the DJIA...

**Markets**  
**IV INDEX MONITOR**

Index	IVX	Change	1-Yr Hi/Lo
	11.9	-0.4	22/9
	16.8	+0.2	26/11
	16.9	-0.6	25/13
	12.1	-0.5	23/9
	91.9	-5.5	129/66
	14.9	-0.5	26/12
	14.9	-0.7	25/12
	15.2	+0.1	26/12
	17.1	+0.1	26/12
	10.4	-0.3	17/8
	37	-1.7	47/22
	25.6	-1.3	37/22
	23.2	-0.3	36/20

S&P 500 INDEX (SPX)





# Quotes & Tools

# Quotes & Tools



## Option Chain

View a list of all the options contracts available for a given security

## Key Statistics

## IV Index

## Option Quote & Chart

## Probability Calculator

## P/L Calculator

## Market Commentary



# Quotes & Tools



## Option Chain

## Key Statistics

Learn about the overall options volume and volatility for an underlying security

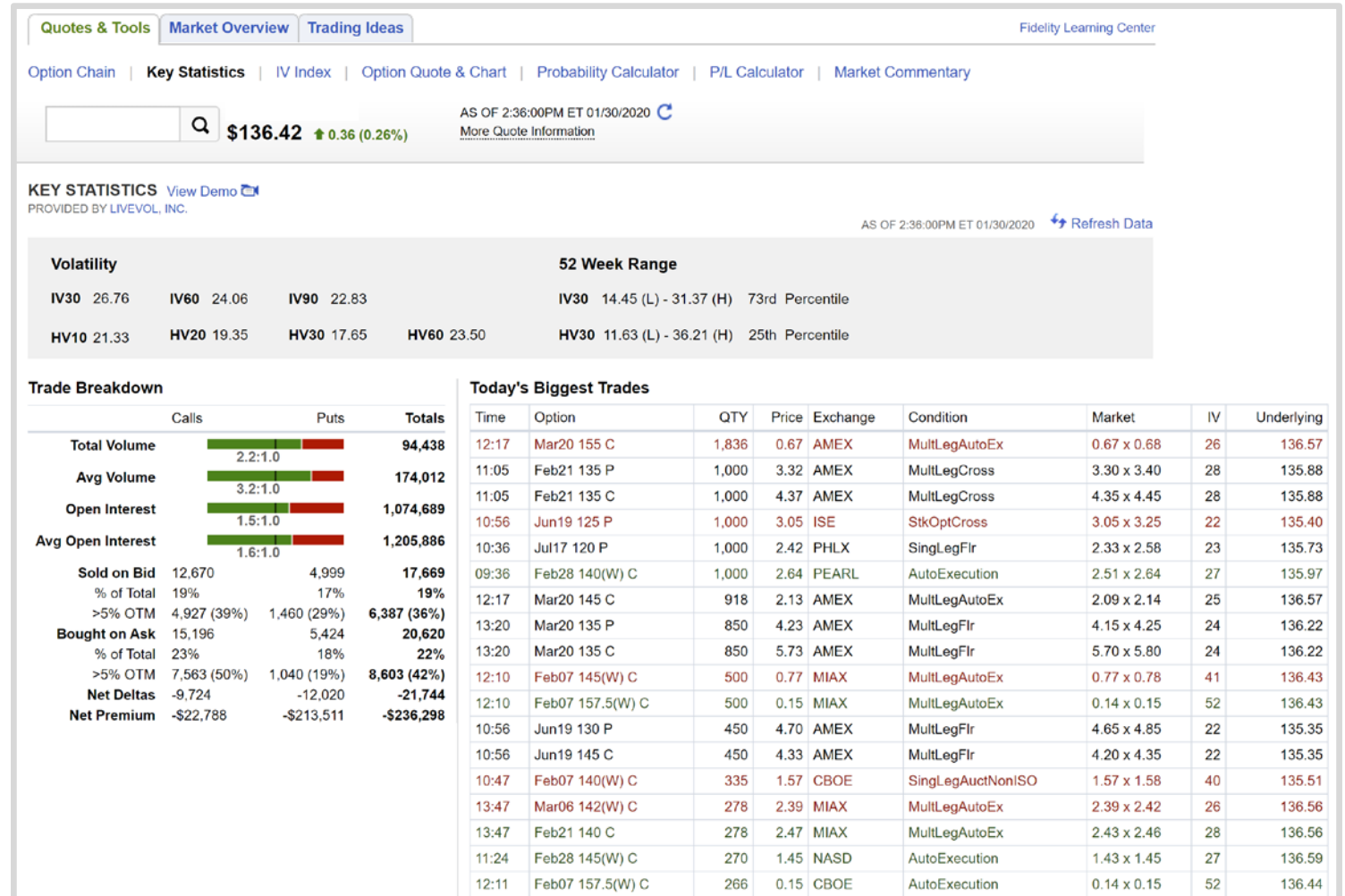
## IV Index

## Option Quote & Chart

## Probability Calculator

## P/L Calculator

## Market Commentary



# Quotes & Tools



Option Chain

Key Statistics

IV Index

Compare the historical volatility of an underlying security with the implied volatility of its options

Option Quote & Chart

Probability Calculator

P/L Calculator

Market Commentary

Quotes & Tools
Market Overview
Trading Ideas
Fidelity Learnin

Option Chain
Key Statistics
IV Index
Option Quote & Chart
Probability Calculator
P/L Calculator
Market Commentary

**\$136.37** ↑ 0.31 (0.23%)

AS OF 2:37:00PM ET 01/30/2020

[More Quote Information](#)

**IV INDEX**

Implied Volatility Index

Term	Current IV Index				1 Week Ago		1 Month Ago	
	Call	Chg.	Put	Chg.	Call	Put	Call	Put
7 Days	39.57%	12.10%	39.30%	12.55%	25.18%	24.59%	19.05%	18.78%
14 Days	32.88%	8.62%	32.68%	9.08%	22.68%	22.04%	23.06%	22.76%
21 Days	28.83%	5.64%	28.62%	6.57%	21.78%	21.09%	22.07%	21.91%
30 Days	26.72%	3.45%	26.50%	5.16%	22.38%	20.94%	22.12%	21.71%
60 Days	23.87%	0.70%	23.57%	2.40%	22.71%	20.87%	22.72%	21.63%
90 Days	23.01%	0.17%	22.13%	0.59%	22.69%	21.49%	22.96%	21.78%
120 Days	23.17%	N/A%	21.48%	N/A%	N/A%	N/A%	N/A%	N/A%
150 Days	23.02%	-4.45%	21.33%	-5.43%	25.18%	24.59%	19.05%	18.78%
180 Days	22.56%	-1.69%	21.65%	-1.95%	22.68%	22.04%	23.06%	22.76%
270 Days	22.45%	-0.73%	21.83%	-0.22%	21.78%	21.09%	22.07%	21.91%
360 Days	22.57%	-0.70%	21.93%	0.59%	22.38%	20.94%	22.12%	21.71%
720 Days	23.48%	0.31%	22.97%	1.81%	22.71%	20.87%	22.72%	21.63%
1080 Days	23.46%	0.62%	22.99%	1.45%	22.69%	21.49%	22.96%	21.78%

[Refresh](#) | [How to Use the IV Index \(PDF\)](#) | [View D](#)

Historical Volatility

Term	HV	1 Week ago	1 Month ago	52-Week High		52-Week Low	
10 Days	21.33%	8.43%	14.56%	55.89%	04/22/2019	6.91%	01/29/2019
20 Days	19.35%	14.04%	12.64%	42.79%	05/09/2019	9.03%	02/07/2019
30 Days	17.65%	13.58%	14.73%	36.21%	04/30/2019	11.63%	02/22/2019
60 Days	23.50%	21.67%	22.02%	28.48%	06/25/2019	13.56%	04/03/2019
90 Days	20.67%	20.01%	21.18%	27.52%	08/15/2019	19.74%	10/31/2019
120 Days	21.11%	22.07%	22.15%	26.58%	04/17/2019	19.38%	10/31/2019
150 Days	21.29%	20.69%	21.43%	25.93%	11/13/2019	20.12%	03/15/2019
180 Days	20.79%	20.40%	20.82%	24.79%	11/27/2019	19.44%	03/14/2019



# Quotes & Tools



Option Chain

Key Statistics

IV Index

Option Quote & Chart

Access detailed quotes and  
chart individual options contracts

Probability Calculator

P/L Calculator

Market Commentary

Option Quote and Chart

Enter Option Symbol

Find Option e.g., SYMByymmddC99

AS OF 2:40:00PM ET 01/30/2020

Calls			Puts	
Bid	Ask	Strike	Bid	Ask
Jan 31 2020				
36.35	36.55	100.0	0.00	0.07
31.35	31.55	105.0	0.00	0.07
26.35	26.55	110.0	0.00	0.03
21.25	21.55	115.0	0.00	0.03
16.30	16.55	120.0	0.00	0.01
15.25	15.55	121.0	0.00	0.03
14.25	14.55	122.0	0.00	0.01
13.25	13.55	123.0	0.00	0.02

Quotes delayed at least 15 min. [Option Chain](#)

Options trading entails significant risk and is not appropriate for all investors. Please read the [Characteristics and Risks of Standardized Options](#), which is available from the SEC. Supporting documentation for any claims, if applicable, will be provided to investors upon request. News, commentary, data, charts, research reports, ratings and analyst opinions and other information are provided by third-parties unaffiliated with Fidelity and are intended for research purposes to help investors make informed decisions. All information supplied or obtained from this page is for informational purposes only and does not constitute an offer of or a solicitation of an offer to buy or sell a security, or a security or investment strategy. Fidelity does not endorse or adopt any particular investment approach to evaluating individual securities. Fidelity makes no guarantees that information provided is accurate and does not provide any warranties regarding results obtained from its use.

# Quotes & Tools



Option Chain

Key Statistics

IV Index

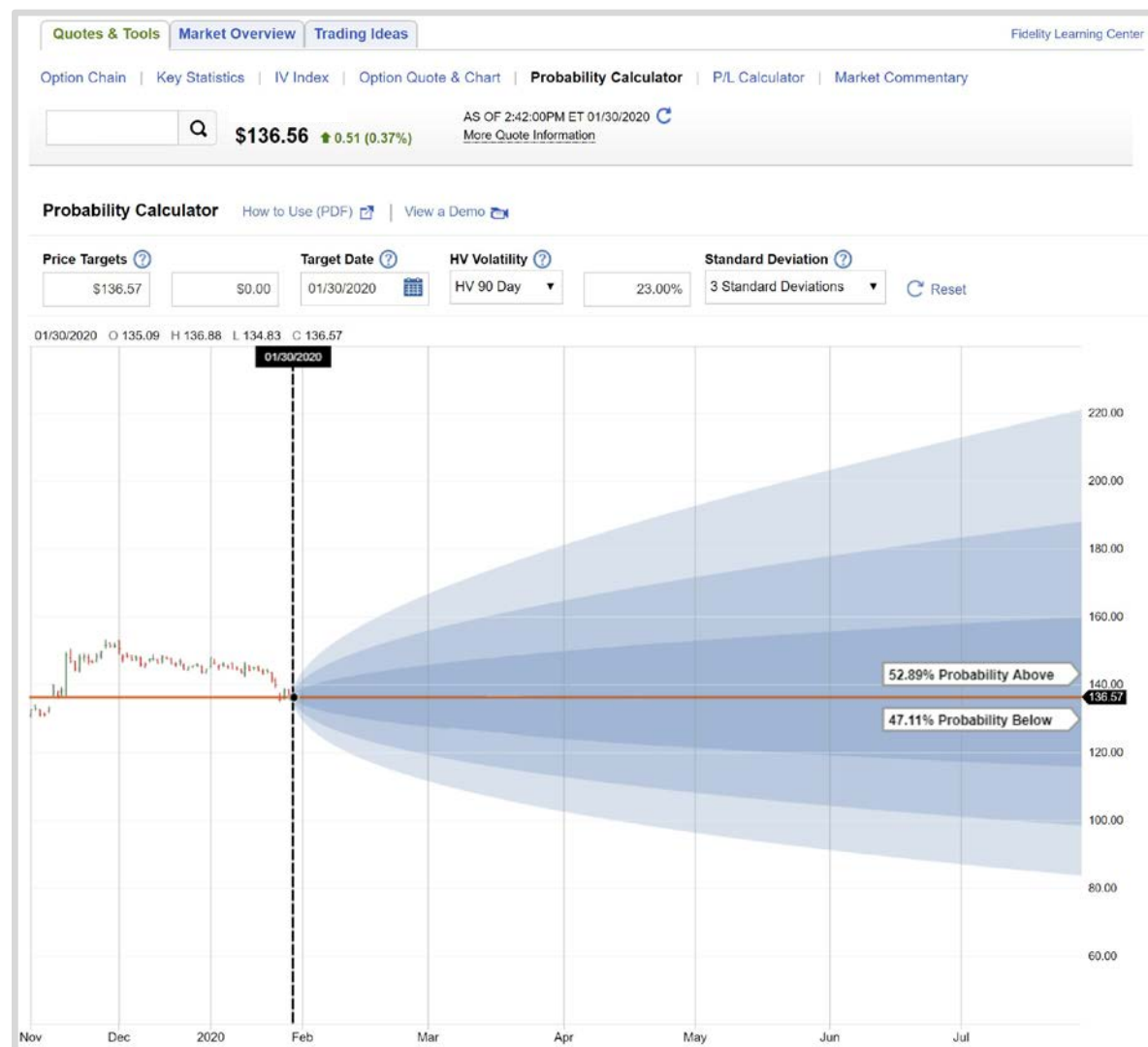
Option Quote & Chart

Probability Calculator

Estimate the underlying index or equity trading above, below, or between preselected price targets by a target date

P/L Calculator

Market Commentary



# Quotes & Tools



Option Chain

Key Statistics

IV Index

Option Quote & Chart

Probability Calculator

P/L Calculator

Chart the profit and loss potential of your trades before you place them

Market Commentary

Quotes & Tools
Market Overview
Trading Ideas
Fidelity Learning Center

Option Chain | Key Statistics | IV Index | Option Quote & Chart | Probability Calculator | **P/L Calculator** | Market Commentary

Q
\$136.68
↑ 0.62 (0.46%)

AS OF 2:49:00PM ET 01/30/2020
More Quote Information

### P/L CALCULATOR

Add Option Contract(s) [Find Symbol](#)

Price/Volatility
Interest
Dividends/Size

**Evaluation Price**

**Days to Expiration**  Calendar

Today: 01/30/20      Expiration: 01/31/20

**Volatility Change**  Absolute ▾

-100%      100%

[Restore Defaults](#) [Apply](#)

**DIS - The Walt Disn...**
Last: 136.71 | Change: 0.65

Price Points	P/L
75.00	\$3,660.00
105.00	\$3,160.00
120.00	\$1,660.00
135.00	\$160.00
136.60	\$0.00
150.00	-\$1,340.00
165.00	-\$2,840.00
180.00	-\$4,340.00
195.00	-\$5,840.00
--	--

Refresh | [How to Use the P/L Calculator \(PDF\)](#) | [View Demo](#)

**Graph Display**  Price  Mid-Price | [Invert Position](#)

**Total Strategy**

Bid	Mid	Ask	Delta	Gamma	Theta	Vega
36.60	36.70	36.80	-100.00	0.00	-0.00	-0.00

Buy/Sell	Quantity	Expiration/Strike	Bid	Ask	Theoretical Price	Evaluation Price	IV	Delta	Gamma	Theta	Vega	Action
<input checked="" type="radio"/> Buy <input type="radio"/> Sell	<input style="width: 50px;" type="text" value="1"/>	Jan 31 2020 100 Call	36.60	36.80	36.71	<input style="width: 50px;" type="text" value="36.60"/>	250.00	-100.00	0.00	-0.00	-0.00	<a href="#">Trade</a>

P/L Calculator provided by: IVolatility.com

# Quotes & Tools



Option Chain

Key Statistics

IV Index

Option Quote & Chart

Probability Calculator

P/L Calculator

Market Commentary

Provides timely intra-day  
market commentary

Quotes & Tools | Market Overview | Trading Ideas | Fidelity Learning Center

Option Chain | Key Statistics | IV Index | Option Quote & Chart | Probability Calculator | P/L Calculator | Market Commentary

AS OF 2:52:00PM ET 01/30/2020

\$136.58 ↑ 0.52 (0.38%)

More Quote Information

MARKET COMMENTARY

THU JAN 30, 2020	WED JAN 29, 2020	TUE JAN 28, 2020	MON JAN 27, 2020	FRI JAN 24, 2020
---------------------	---------------------	---------------------	---------------------	---------------------

**Stocks Red as Virus Worries Persist**  
PROVIDED BY ARGUS - 01/30/2020 5:43:00AM

Stocks opened lower Thursday and major indices are still trading in red numbers despite rising somewhat since the open. Better-than-expected corporate earnings continue to help buoy sentiment even as investors keep an eye on the possible effects of a coronavirus outbreak in China on the global economy.

At present, the S&P 500 is down 0.53%, the DJIA is down 0.41%, and the NASDAQ is down 0.46%.

Industries doing well today include food products, software and beverages. Industries trading lower today include air freight and logistics, tobacco, and interactive media and services. The VIX is up 1.19 to 17.58. The most heavily traded options this morning are on the CBOE SPX Volatility Index (VIX), with 24,065 Feb. 19, 2020 12.50 put contracts on the board. The total put/call ratio as of 10:00 a.m. was 0.98 (361,567/370,419). The advancers/decliners ratio for NYSE stocks is 873/1,839 while the advancers/decliners ratio for NASDAQ stocks is 931/1,919. [InvestorsKeyhole, various news and data sources]

**Latest News**

[UPS, Amazon Grow Closer as FedEx Goes Its Own Way](#)  
Dow Jones & Company, Inc. - 01/30/2020 2:01:00PM

[Altria Takes \\$4.1 Billion Charge on Juul Investment -- 3rd Update](#)  
Dow Jones & Company, Inc. - 01/30/2020 1:33:00PM

[Intelsat Bonds Fall on Fears Over FCC Auction Plan](#)  
Dow Jones & Company, Inc. - 01/30/2020 1:30:00PM

[Slack Nylon Demand Strains DuPont's Sales](#)  
Dow Jones & Company, Inc. - 01/30/2020 1:23:00PM

[More News...](#)



# Trading Ideas

# Trading Ideas > Scans & Screens



## Market Scanner

Search for securities with unique characteristics based on prebuilt or custom scans

## Strategy Ideas

## Strategy Evaluator

Quotes & Tools | Market Overview | **Trading Ideas**
Fidelity Learning Center

**Scans & Screens** ?

**Market Scanner** | Strategy Ideas | Strategy Evaluator

**Tools** ?

Report Finder | Intra-Day Trade Ideas | Expert Options Analysis

**MARKET SCANNER** [How to use the Market Scanner](#) | [View Demo](#)

PROVIDED BY LIVEVOL INC.

**Custom Scans** [Create New](#)

**Top Scans**

- High Option Volume
- High Call Volume
- High Put Volume
- High Open Interest
- Imploding IV30s
- Exploding IV30s

**Top Options Scans**

**Implied Volatility**

**IV vs HV**

**Order Flow**

**Time Spreads**

**Earnings**

**High Option Volume - High option volume today, relative to average (minimum 200 average)**

AS OF 01/30/2020 2:56:00PM [Refresh Data](#) | [Export Data](#)

Symbol	Company Name	Last	Last Change	Option Volume	Average Option Volume	Percent Average Volume	
+ GEL	Genesis Energy, L.P.	\$18.08	-\$0.61	36,868	904	4,078%	Action▼
+ WEX	WEX Inc	\$223.28	-\$3.34	8,023	258	3,110%	Action▼
+ PENN	Penn National Gaming, Inc	\$30.71	\$1.70	32,130	1,086	2,959%	Action▼
+ MUSA	Murphy USA Inc	\$106.94	-\$6.08	7,567	388	1,950%	Action▼
+ KEX	Kirby Corporation	\$77.58	-\$7.22	5,517	306	1,803%	Action▼
+ BMO	Bank of Montreal (USA)	\$78.16	-\$0.21	5,532	372	1,487%	Action▼
+ FTI	TechnipFMC PLC	\$16.20	-\$0.45	12,819	1,199	1,069%	Action▼
+ SKY	Skyline Champion Corp	\$29.53	-\$1.31	2,488	272	915%	Action▼
+ CCJ	Cameco Corp (USA)	\$8.23	-\$0.14	42,864	4,767	899%	Action▼
+ ADNT	Adient PLC	\$19.09	-\$0.50	10,112	1,204	840%	Action▼
+ KWEB	KraneShares Trust KraneShares CSI China Internet ETF	\$48.41	-\$1.31	50,039	6,002	834%	Action▼
+ MUR	Murphy Oil Corporation	\$21.14	-\$1.41	19,546	2,346	833%	Action▼
+ YANG	Direxion Daily China 3X Bear Shares	\$47.65	\$2.69	2,858	346	826%	Action▼
+ XLRN	Acceleron Pharma Inc	\$86.35	\$6.59	3,216	402	800%	Action▼
+ EZPW	EZCORP Inc	\$6.41	\$0.09	1,614	206	783%	Action▼
+ EHTH	eHealth, Inc.	\$112.92	-\$5.58	9,956	1,354	735%	Action▼
+ NCLH	Norwegian Cruise Line Holdings Ltd	\$54.13	-\$1.89	7,125	1,027	694%	Action▼



# Trading Ideas > Scans & Screens



## Market Scanner

## Strategy Ideas

Generate new trading ideas with your strategy in mind using these easy-to-navigate filters

## Strategy Evaluator

The screenshot displays the 'Trading Ideas' section of the Fidelity Learning Center. It features a navigation bar with 'Quotes & Tools', 'Market Overview', and 'Trading Ideas'. Below this, there are tabs for 'Scans & Screens' (including Market Scanner, Strategy Ideas, and Strategy Evaluator) and 'Tools' (including Report Finder, Intra-Day Trade Ideas, and Expert Options Analysis). The main content area is titled 'STRATEGY IDEAS' and includes a 'How to use Strategy Ideas (PDF)' link and a 'View Demo' button. A note states 'PROVIDED BY LIVEVOL, INC.' and a yellow box instructs users to 'select filters to narrow down matching strategies, or click on any strategy name to learn more'. The interface is divided into two main sections: 'Select Filters' and 'Available Strategies'. The 'Select Filters' section includes three categories: Outlook (Bullish, Neutral, Bearish), Profit Potential (Limited, Substantial, Unlimited), and Risk Potential (Limited, Substantial, Unlimited). The 'Available Strategies' section lists 15 different trading strategies in a grid format: Bearish OTM Put, Bullish OTM Call, Call Time Spread, Put Time Spread, Collar, Covered Call, Double Diagonal, Iron Condor, Long Call Butterfly, Cash Covered Puts, Long Put Butterfly, Long Straddle, Short Straddle, Long Vertical Call Spread, Long Vertical Put Spread, Short Vertical Put Spread, and Short Vertical Call Spread. At the bottom, there is a 'Top 50 Results' section with an 'Adjust Scan Parameters' area containing an 'Enter Underlying' field with a 'Find a Symbol' link, a 'Days to Expiration' dropdown menu set to '60 Days or Less', and 'Apply' and 'Reset' buttons.

# Trading Ideas > Scans & Screens



Market Scanner

Strategy Ideas

Strategy Evaluator

Find contracts matching your strategy, and evaluate their gain and loss potential

Quotes & Tools
Market Overview
Trading Ideas

**Scans & Screens** ?  
 Market Scanner | Strategy Ideas | **Strategy Evaluator**

**Tools** ?  
 Report Finder | Intra-Day Trade Ideas | Expert Options Analysis

**Strategy Evaluator**

[Search for](#) [How to Use the Strategy Evaluator](#) | [View Demo](#)

Underlying	Strategy	Expiration	Strike	Offset	Volatility	Target Profit	Investment
DIS <small>Find Symbol</small>	Call	Jan 31, 20	Near the Money	5	0 %	1 %	\$ 10000
	Put	Feb 07, 20					
	Buy Write	Feb 14, 20					
	Butterfly Call	Feb 21, 20					
	Butterfly Put	Feb 28, 20					
	Calendar Call	Mar 06, 20					
	Calendar Put	Mar 13, 20					
	Collar	Mar 20, 20					

**Evaluation Point**  days to expiration

**Underlying Move**  %

**Show**

# Trading Ideas > Tools



## Report Finder

Discover real-time covered call and calendar spread trading ideas

## Intra-Day Trade Ideas

## Independent Expert Options Analysis

Quotes & Tools | Market Overview | **Trading Ideas**
Fidelity Learning Center

**Scans & Screens** ?

[Market Scanner](#) | [Strategy Ideas](#) | [Strategy Evaluator](#)

**Tools** ?

**Report Finder** | [Intra-Day Trade Ideas](#) | [Expert Options Analysis](#)

**REPORT FINDER**

Search for reports produced after previous day's close.

**FIND BY ATTRIBUTE** Saved Searches ▾

Stocks | [ETFs](#)

**Reports**

In/At the Money

Out of the Money

Both

**Argus Rating**

Buy  Hold

[Show More Attributes](#)

**Strategies**

Covered Calls

Diagonal Spreads

Both

**Argus Top Rated**

Focus List  Best 10

**Days to Expiration**

From  to

**Downside Protection**

From  % to  %

Save Search | Clear All **See Results**

**FIND BY SYMBOL**

[Find Symbol](#)

**RESULTS**

**Covered Calls (01/30/2020) | Diagonal Spreads (01/30/2020)**

AS OF PREVIOUS CLOSE 01/29/2020 4:00:00PM

Buy Side		Sell Side		Argus Rating									
Stock Symbol	Previous Close	Expiration/Strike	Net Debit/Break Even	Downside Protection	In The Money	RETURN RATE		Annual Div Yield	Argus Focus List	Argus Rating	Risk	Argus Report	News & Events
Covered						Assigned	Annualized*						
<a href="#">+</a> WOR	\$37.53	Jun 19 20 35 C	\$33.53	10.66%	6.74%	4.38%	11.27%	2.33%		HOLD	2 <span style="color: green;">On</span>	PDF	<a href="#">View ▾</a>

# Trading Ideas > Tools



## Report Finder

## Intra-Day Trade Ideas

Explore intra-day trading ideas generated from current market conditions (by Argus Research)

## Independent Expert Options Analysis

Quotes & Tools
Market Overview
Trading Ideas
Fidelity Learning

Scans & Screens
Tools

Market Scanner | Strategy Ideas | Strategy Evaluator
Report Finder | **Intra-Day Trade Ideas** | Expert Options Analysis

### Intra-Day Trade Ideas

Check back during the day for updated trade ideas

**THU**  
JAN 30, 2020

**WED**  
JAN 29, 2020

**MON**  
JAN 27, 2020

**FRI**  
JAN 24, 2020

**WED**  
JAN 22, 2020

FEATURED SYMBOL

6:54 AM ET  
**DOW**

6:43 AM ET  
**MCD**

**RESULTS: DOW - DOW INC**

**Strategy**

Look at the March 20, 2020 \$50.00 covered call. For each 100 shares of Dow Inc. you buy, sell one DOW March 20, 2020 covered call option for a \$47.10 (\$48.10 - \$1.00) debit or better. That's potentially a 46% annual return.

Strategy	Symbol (Expiration/Strike)	Days to Expiration	Strategy Price
Buy Side	DOW		\$48.10
Sell Side	Mar 20 2020 50 C	49	\$1.00
			Net Debit/Break Even: \$47.10

**Argus Research Notes**

We expect the new Dow - a recent spinoff from DowDuPont - to benefit over time from its low cost structure, solid cash flow and declining capital spending requirements, and strong presence in all key geographic and end-use markets. However, we expect Dow to face pressure in the near term from increased production capacity (for ethylene, polyethylene, propylene, distillates, and ethane) and weaker global economic conditions. On January 29, Dow Inc. reported adjusted fiscal 4Q19 earnings from continuing operations of \$577

**RELATED INFORMATION**

DOW INC (DOW)

\$48.47

-1.20 (-2.42%)

AS OF 4:10:00PM ET 01/30/2020

**Bid** 48.47 X 1

**Ask** 49.45 X 1

**Vol** 5,603,743

**IV30** 29.68 +0.81

**HV30** 27.36 +4.77

Stock Research | Quotes and Tools

---

**RELATED NEWS**

Dow Gets Downgrade to Sector Perform at RBC Amid Concerns About Commodity Industry Weakness

MT Newswires - 01/30/2020 3:55:00PM

# Trading Ideas > Tools



Report Finder

Intra-Day Trade Ideas

Independent Expert  
Options Analysis

Gain daily insights from  
analysts at LiveVol

Quotes & Tools
Market Overview
Trading Ideas
Fidelity Learning Center

**Scans & Screens** [?](#)

[Market Scanner](#) | [Strategy Ideas](#) | [Strategy Evaluator](#)

**Tools** [?](#)

[Report Finder](#) | [Intra-Day Trade Ideas](#) | [Expert Options Analysis](#)

**EXPERT OPTION ANALYSIS** [View Demo](#)

PROVIDED BY LIVEVOL, INC.

**THU**  
JAN 30, 2020

**WED**  
JAN 29, 2020

**MON**  
JAN 27, 2020

**FRI**  
JAN 24, 2020

**THU**  
JAN 23, 2020

**PENN NATIONAL GAMING INC (PENN) - Wanna Bet?**

POSTED 12:43:16PM ET 01/30/2020

**Overview**

Super Bowl LIV will pit the NFC champion San Francisco 49ers against the AFC champion Kansas City Chiefs on Sunday, February 2. It's the biggest U.S. sporting event of the year. It's also the largest day of the year for sports gambling.

Sports betting has quickly become the hottest trends in the U.S. gambling industry. It is even more readily available since much of online sports wagering is done from mobile phones. The industry has ballooned since May 2018 when the Supreme Court struck down federal legislation that banned sports wagering in all but a handful of states.

Since that time, there has been a rush to legalize sports wagering. Betting is now allowed in 20 states, including Pennsylvania, New Jersey, Illinois and Michigan. Analysts believe more states will follow. An estimated \$150 million is bet on sports illegally each year, according to the American Gaming Association. Quite frankly, there are plenty of states that are eager to convert some of that money into tax revenues via legal wagering.

**RESEARCH IN THIS DAY'S POSTS**

PENN - PENN NATIONAL GAMING INC

**\$30.87** ▲1.85 (6.37%)

AS OF 4:00:00PM ET 01/30/2020

**Bid** 30.50 X 2  
**Ask** 30.79 X 2  
**Vol** 10,256,993  
**IV30** 50.64 +2.25  
**HV30** 38.84 +13.04

[Stock Research](#) | [Quotes & Tools](#)

---

**RELATED NEWS**

[Penn National Shares Up 8% Day After Barstool Sports Investment](#)  
Dow Jones & Company, Inc. - 01/30/2020 12:16:00PM

[ISS - EVA downgrades PENN NATIONAL GAMING INC from OVERWEIGHT to HOLD.](#)  
Investors Analyst Actions - public - 01/30/2020 2:10:00AM

[Race Is on to Cash in on Sports Betting](#)  
Dow Jones & Company, Inc. - 01/29/2020 7:20:00PM

[Penn National Gaming to buy stake in Barstool](#)



# Market Overview



# Market Overview



Get a quick look at what's happening in today's option markets

## Argus Focus List

View the day's top covered calls and diagonal spreads

## Market Commentary

Read the top headlines from today

## Market Scanner

View the day's high option volumes

Quotes & Tools
Market Overview
Trading Ideas

[View Demo](#) | [Fidelity Learning Center](#)

### Argus Focus List

PROVIDED BY ARGUS  
01/29/2020 4:00:00PM

Top covered calls and diagonal spreads.

Covered Calls
Diagonal Spreads

Stock Symbol	Annualized Return Rate*
TWTR	281.60%
WDC	198.75%
ATVI	172.56%
ANET	139.11%
DIS	137.96%
NOW	133.65%
SPLK	101.08%
CL	94.95%
MGM	92.70%
APO	80.28%

[See More](#)

\*Annualized Return Rate is shown for comparison purposes only.

### Strategy Evaluator

PROVIDED BY DASH FINANCIAL TECHNOLOGIES LLC

Determine single- and multi-leg opportunities based on your market sentiment.

### Market Commentary

Stocks Red as Virus Worries Persist

PROVIDED BY ARGUS  
01/30/2020 5:43:00AM

Stocks opened lower Thursday and major indices are still trading in red numbers despite rising somewhat since the open. Better-than-expected corporate earnings continue to help buoy sentiment even as investors keep an eye on the possible effects of a coronavirus...

[See More Commentary](#)

### Market Scanner

PROVIDED BY LIVEVOL, INC.  
AS OF 01/30/2020 2:54:00PM

High Option Volume
Exploding IVs
Imploding IVs

High options volume today, relative to average, minimum 200 average.

Symbol	Company Name	Last	Last Change	Option Volume	Avg. Option Volume	% Avg. Volume
GEL	Genesis Energy, L.P.	\$18.07	-\$0.62	36,868	904	4,078
WEX	WEX Inc	\$222.78	-\$3.84	8,023	258	3,110
PENN	Penn National Gaming, Inc	\$30.63	\$1.61	32,010	1,086	2,948
MUSA	Murphy USA Inc	\$106.92	-\$6.11	7,572	388	1,952
KEX	Kirby Corporation	\$77.61	-\$7.20	5,515	306	1,802
BMO	Bank of Montreal (USA)	\$78.07	-\$0.30	5,532	372	1,487

### Markets

#### IV INDEX MONITOR

Index	IVX	Change	1-Yr Hi/Lo
SPX	15	+0.6	22/9
NDX	18.3	+0.9	26/11
EEM	19.8	+2.1	25/13
SPY	15	+0.4	23/9
VIX	106.3	+12.5	129/66
RUT	17.3	+0.9	26/12
IWM	17.5	+0.9	25/12
XLFF	16.9	-5.6	26/12
QQQ	18.2	+1	26/12
GLD	10.8	+0.4	17/8
USO	39	+4.8	47/22
EWZ	28	+1.8	37/22
GDX	25.1	+0.9	36/20

S&P 500 INDEX (SPX)

IVX Chart

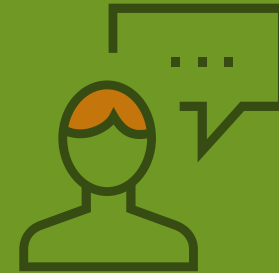
Provided by IVVolatility.com ET

[Next Expiration](#)

February 22, 2020 [📅](#)

[Option Strategy Quick Guide](#) [📖](#)

# Visit the Fidelity Learning Center



Learn more  
about options

---

**Read:** Access the Options Strategy Guide

---

**Watch:** Check out videos that cover options basics

---

**Attend:** Register for monthly webinars

# Thank You



Please join us for our  
upcoming webinars

---

For more information, please visit  
[Fidelity.com](https://www.fidelity.com) > News & Research > Options

---

Questions? Call an options trading specialist  
877-907-4429

# Important Information



Options trading entails significant risk and is not appropriate for all investors. Certain complex options strategies carry additional risk. Before trading options, contact Fidelity Investments by calling 800-544-5115 to receive a copy of *Characteristics and Risks of Standardized Options*. Supporting documentation for any claims, if applicable, will be furnished upon request.

Examples in this presentation do not include transaction costs (commissions, margin interest, fees) or tax implications, but they should be considered prior to entering into any transactions.

There are additional costs associated with option strategies that call for multiple purchases and sales of options, such as spreads, straddles, and collars, as compared with a single option trade.

Any screenshots, charts, or company trading symbols mentioned, are provided for illustrative purposes only and should not be considered an offer to sell, a solicitation of an offer to buy, or a recommendation for the security.

Investing involves risk, including risk of loss.

© 2020 FMR LLC. All rights reserved.

Fidelity Brokerage Services, Member NYSE, SIPC, 900 Salem Street, Smithfield, RI 02917

919919.1.0